

Theme Installation Guide

Visit : <https://divithemecenter.com/child-theme-installation-guide/>

Author: Divi Theme Center

Minimum requirements:

WordPress Version : 4.9.8
PHP Version : 7.2.x+
MySQL Version : 5.7.x+

<https://wordpress.org/about/requirements/>

Zip upload installation method (make sure uploads up to 2MB are allowed for your hosting):

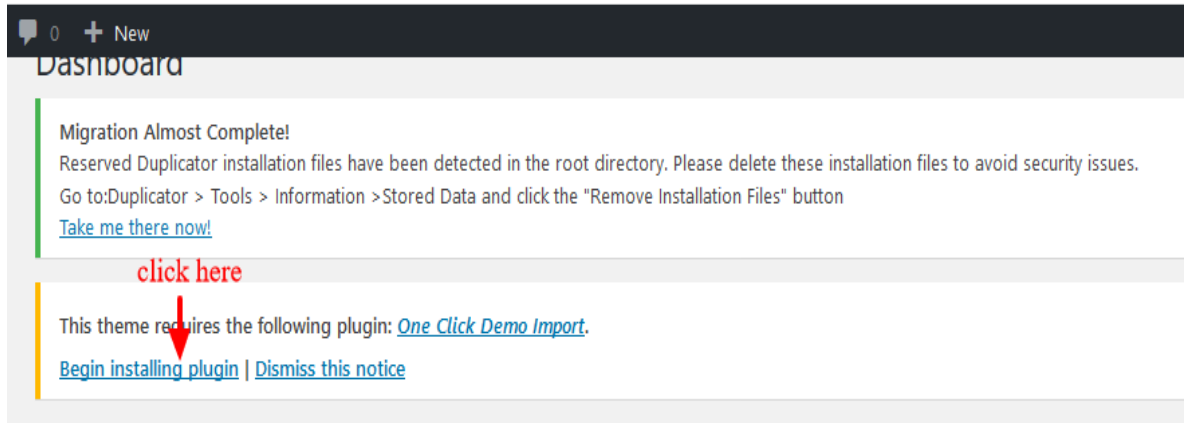
Essentials :-

You need to have 'Divi ' from www.elegantthemes.com/join/ in order to make our 'child theme work '

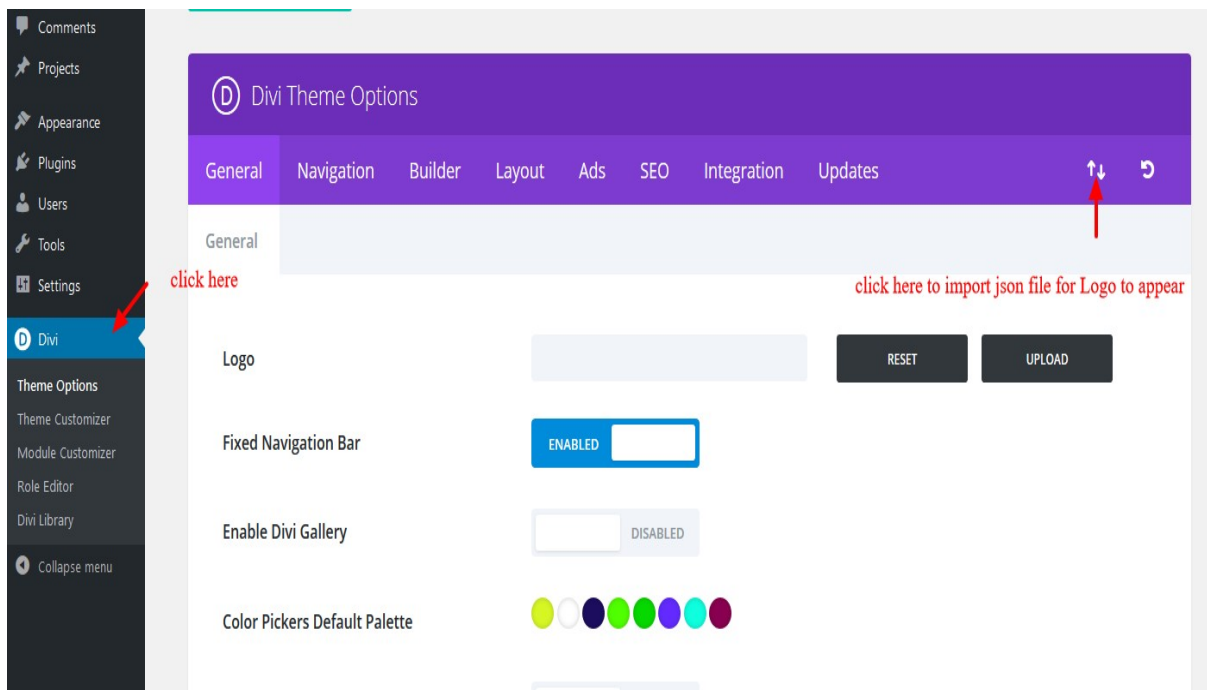
1.Installation Steps:

- 1.Login to your WordPress site administrator panel and head over the Appearances -> Themes
2. Click 'Add New'
3. Choose the 'Upload' option.
4. First Activate Divi Parent Theme By Uploading a copy Available With You.
5. Install and activate copy of '**Child Theme**' Zip after extracting the '**Main**' product Zip you have got as a product file .
6. Make Sure You upload only '**Child Theme**' Zip under **Appearance -> Themes** and not complete Zip file which have other files too.
- 7.After activating Child Theme at top you will see the notification as ' **begin installing plugin**' plugin name: '**one click demo import**'. Click on that link to install concern plugin.

Screenshot



8. Go To "Appearance". Click on "Import Demo Data" and Click on "Import Demo Data" Button. This will import Child Theme Content into your site.
9. Go to Appearance > Menus. Assign the menu as the primary menu.
10. Go to Divi and Click on "Child Theme Settings" and set additional settings as per need.
11. To Import Logo You Need Import JSON File : Go To "Divi Theme Option". Import JSON and Click on Import.



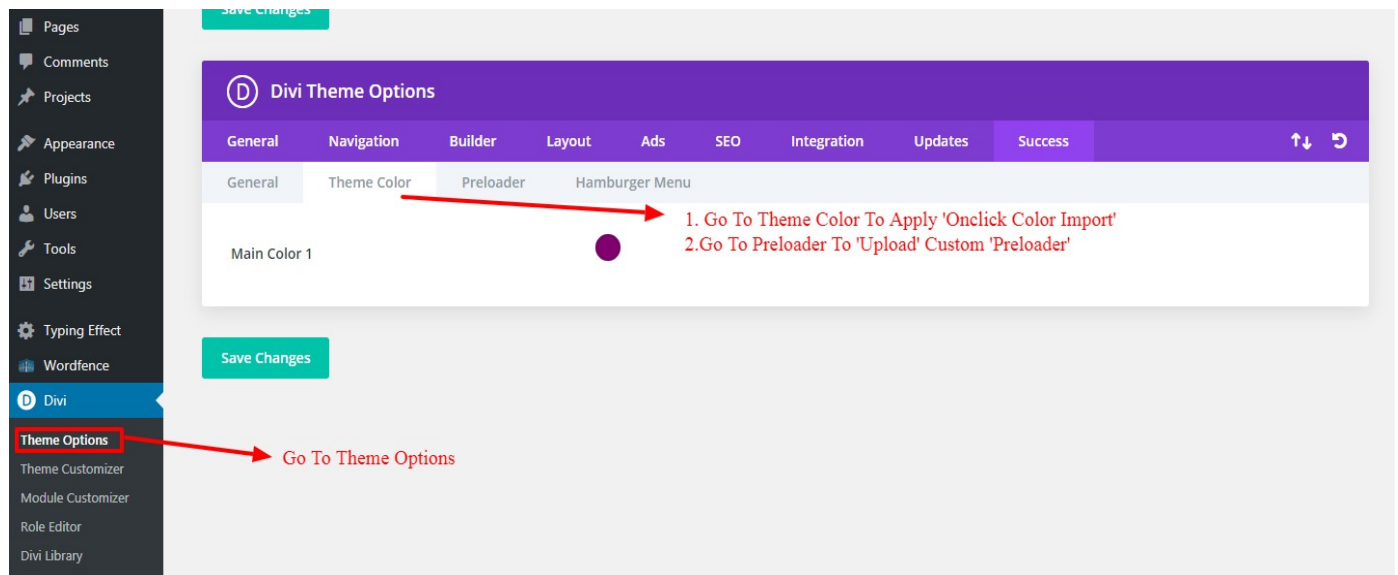
2.FTP uploads installation method:

- 1.Upload '**Child Theme**' Zip as well 'Divi' Zip that you purchased to /wp-content/themes/ directory using your FTP client.
2. Extract both the Zip in the same folder.
3. Activate the Theme through the 'Appearance - > Themes 'Menu'
4. Go to the ' WordPress Admin ' and repeat step " 1 to 10 " above

Finally enjoy it.

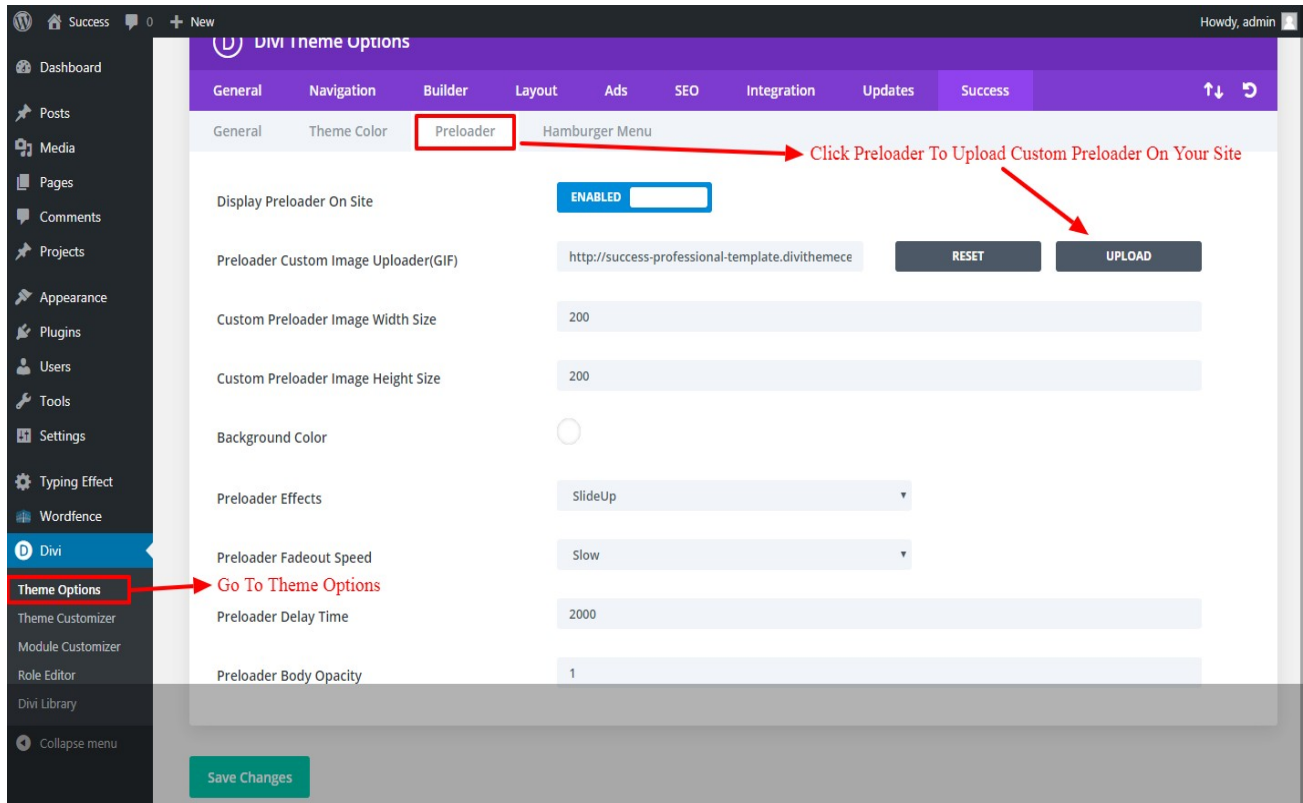
Apply One Click Color Import :

1. Go To "**Divi Theme Option**".
2. Click on "**Divi Child Theme**" and select " **Theme Color** " and apply changes as shown in the screenshot below.
3. Save changes.



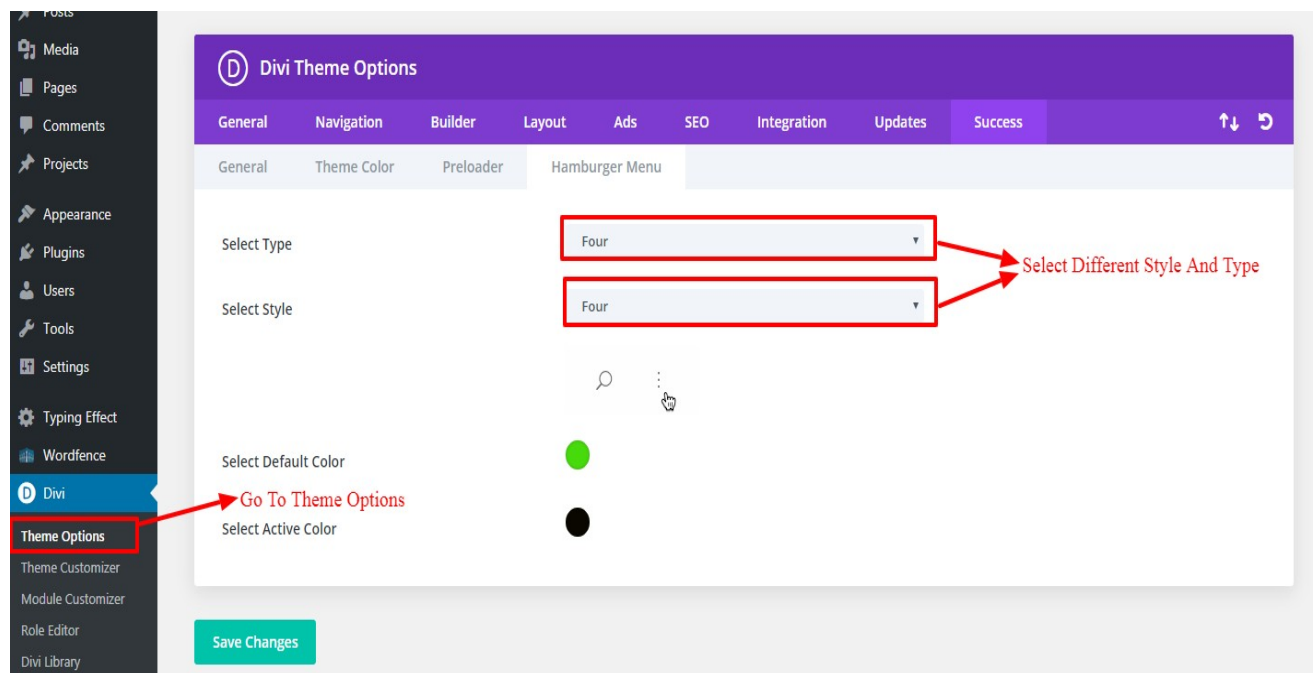
Custom Pre-Loader Option :

1. Go To **"Divi Theme Option"**.
2. Click on **"Divi Child Theme"** and select **"Pre-loader"**. You can upload any custom pre- loader you need apply on your website from the setting.
3. Save changes.



Custom Hamburger Menu Option :

1. Go To "Divi Theme Option".
2. Click on "**Divi Child Theme**" and select "**Hamburger Menu**". You can select style from available 20 combination style by shuffling option under "**Select Type / Select Style**". You can select "**Color**" from the setting too for your Hamburger Menu.
3. Save changes.



Contact Support:-

1. E-mail : leadccare@gmail.com
2. Raise Support Ticket @ www.divithemecenter.com

For Support :- You can raise query or get support under “My-Account” section -> Support Tab or Email at : leadccare@gmail.com

Thank You